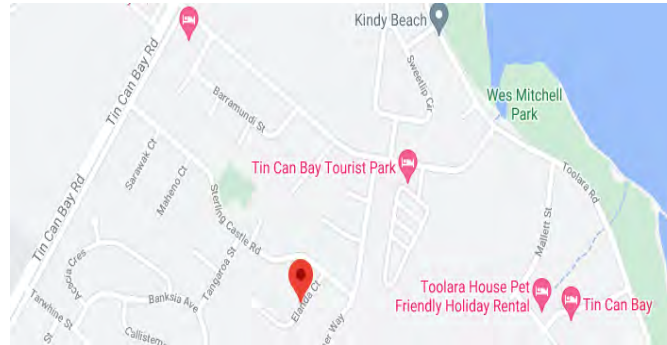
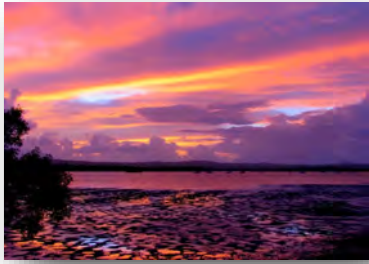


For all booking enquiries:

Contact Weeroona

P (07) 5482 2451 E elanda@weeroona.org.au



Weeroona has been providing support to people with a disability and their families in the Gympie-Cooloola region since 1991.

We are a not for profit organisation registered as a charity and accredited under the NDIS standards.



Like us on Facebook



www.weeroona.org.au

|

07 5482 2451



Elanda Retreat Tin Can Bay



Short Stay Accommodation
Disability



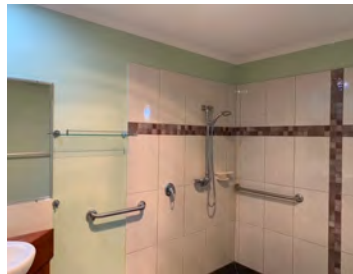
Elanda Retreat Is a

4-bedroom, 2-bathroom, single level, modern house situated near the foreshore in the beautiful community of Tin Can Bay. People with disability, their families / carers / support workers can access this wonderful space for a weekend break away, or a week-long holiday. Access to this facility is able to be funded under STA (Short Term Accommodation), through a participant's NDIS Plan. Alternatively, people may choose to self-fund.



Elanda Retreat

FEATURES



- 4 bedrooms, including 2 worker rooms
- Open plan living - wide access; tv
- 2 bathrooms - large with wheelchair accessible shower
- Spacious kitchen, d'washer, microwave
- Wide laundry, washing machine
- Outdoor entertaining areas, bbq
- Undercover, heated swimming pool
- Electric garage for ease of entry



Things to do...

Meet and Greet the Visiting Dolphins



Try your hand at fishing

Take a walk / bike ride—such beautiful scenery and many dedicated safe, flat and accessible pathways



Golfing



Tennis

Cricket or a picnic by the water

